

FIG.1

FIG.2

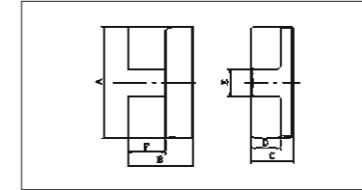


FIG.3

UF 型 / UF Core

型号 TYPE	图例 FIG.	尺寸 Dimensions (mm)					
		A	B	C	D	E	F
UF6.2/11/2	1	6.2±0.2	5.5±0.1	2±0.2		3.2min	3.5±0.15
UF6.4/11.4/5	1	6.4±0.15	5.7±0.1	5±0.2	2±0.1	2.4±0.1	3.2±0.15
UF9.8/14/3B	1	9.8±0.3	7.1±0.2	2.9±0.2		4.1min	4.3±0.2
UF10.5/15.8/5C	1	10.5±0.3	7.8+0.4/-0.25	5±0.2		5.5±0.3	5.5+0.3/-0.4
UF12/16/5	1	12.0±0.3	7.8+0.2/-0	4.6+0/-0.3	2.25±0.1	7.2min	5.6+0.15/-0
UF14/14.2/3A	1	14±0.3	7.1±0.1	3±0.1		8±0.15	4.1±0.1
UF15/11/6	1	15.0±0.5	5.5±0.1	5.6±0.2	3.0±0.15	8.5min	2.8+0.2/-0.1
UF15.1/64/3.2	1	15.1±0.3	32±0.2	3.2±0.25		6.1±0.3	26±0.2
UF15.2/15.3/64A	1	15.2±0.5	7.8+0/-0.3	6.7+0/-0.6		5.0min	2.5±0.2
UF15/23/7K	1	15.4±0.5	11.45±0.2	6.25+0.4/-0		5.4±0.4	6.4+0.35/-0.2
UF16/20/6BD	1	15.9±0.3	9.7±0.2	6±0.2		6.5min	6±0.15
UF16/21/6G	1	16.2±0.3	10.6±0.2	6±0.2		7±0.3	6.6±0.2
UF16/24/5	1	16.2±0.25	11.8+0.4/-0	5.5+0/-0.3	5.5+0/-0.3	7.7min	8.8+0.4/-0
UF16.8/22.9/27.9	1	16.76±0.38	11.94±0.3	27.94±0.63		8.89±0.3	8.89±0.3
UF18/25/15	1	18.0±0.25	12.5±0.2	15.0±0.2		5.0±0.25	6.5±0.25
UF19.6/76/3.8	1	19.6±0.3	38±0.2	3.8±0.2		5±0.25	30.2±0.2
UF22.8/23/7	1	22.8±0.3	6.7±0.2	22.7±0.3		14.1±0.3	2.7±0.2
UF23/31/5B	1	23±0.4	15.7+0.4/-0	5±0.2	5.5±0.2	12±0.4	10.2+0.4/-0
UF25/39/13A	1	24.8±0.7	20.0+0/-1.0	13.0+0/-0.5		8.2±0.3	11.0+0.5/-0
UF27/58/10B	1	27.2±0.3	29±0.25	10±0.2		14min	22.5±0.25
UF28/43/6	3	27.8±0.3	21.3±0.2	5.5±0.2	3.6±0.15	7.8±0.3	14.7±0.2

C1	Ae	Le	Amin	Ve	AL(±25%)				重量 g/PRS
					TP4	TP4A	TP4W	TPW33	
8.27	3.09	25.59	2.8	79.1	220	230	260	280	0.45
2.29	10.68	24.49	10	261.6	750	800	900	980	1.4
4.36	7.94	34.63	7.83	275	450	470	550	600	1.4
3.28	12.36	40.53	12.12	500.9	630	650	780	820	2.6
4.49	9.97	44.73	9.9	445.9	470	490	550	600	2.1
4.65	9	41.83	9	376.4	460	480	550	600	1.9
2.45	15.56	38.17	14.84	593.9	800	850	1000	1100	2.96
8.84	14.9	131.75	14.4	1963	285	300	360	390	9.8
1.13	32.31	36.43	31.04	1177.2	1800	1850	2200	2350	6.5
	32.3	52	32.3	1680	1400	1450	1700	1800	9
2.02	24.9	50.17	22.2	1249.3	1100	1150	1300	1400	6.6
2.06	26.04	53.72	240	1398.9	1100	1150	1310	1420	7.17
3.01	20.12	60.56	16.5	1218.5	700	730	900	1000	6.2
0.64	98.51	63.49	85.22	6254.7	3500	3700	4400	4800	32.4
0.59	94.66	55.59	90	5261.7	3600	3750	4500	4800	26.3
5.52	27.99	154.46	27.74	4323.4	470	480	580	620	22.5
	93.88	46.7		4384.8	4400	4550	5200	5800	12.5
2.98	27.69	82.63	27.5	2288.1	800	830	950	1050	11
0.83	105.61	87.4	105.19	9229.9	2900	3000	3600	3900	45
2.15	64.6	139	64.5	8982	1200	1250	1500	1600	46.2
2.07	47.27	97.86	36.3	4625.7	1000	1050	1200	1300	19.9

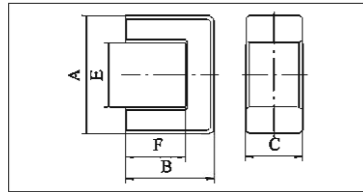
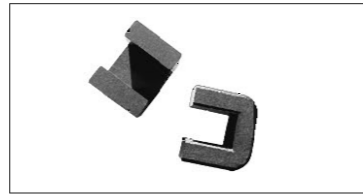
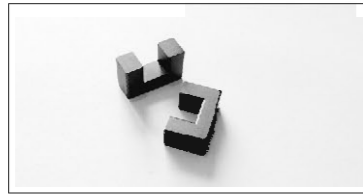


FIG.1

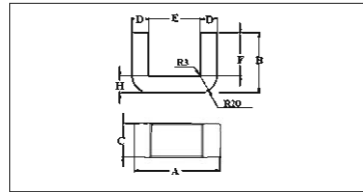


FIG.2

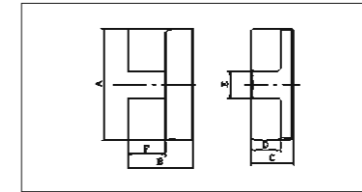


FIG.3

UF 型 / UF Core

型号 TYPE	图例 FIG.	尺寸 Dimensions (mm)					
		A	B	C	D	E	F
UF28/35/6.5	1	28±0.6	17.5±0.15	6.5±0.25		14.6min	11±0.2
UF30.8/50.6/16	1	30.8±1.2	25.3±0.6	16±0.4	10.2±0.2	10.4±0.6	15.15±0.25
UF30.8/52.8/26.1A	1	30.8±1.2	26.4±0.6	26.5+0/-0.8	10.2±0.2	10.4±0.4	16+0.5/-0
UF32.5/56/13A	1	32.5±0.3	27.8±0.25	12.5+0.15/-0.25	9.5±0.15	13.3min	18.2±0.2
UF34/39/13	3	33.7±0.6	19.6±0.2	12.7±0.3	8.8±0.3	8.3±0.5	11.3±0.3
UF35/67/10	1	35±0.4	33.6±0.25	10±0.2		19±0.3	25.6±0.25
UF36.3/22/3	1	36.3±0.5	11±0.5	3±0.2		28.1±0.5	
UF40/49/16	3	40.3±0.4	24.6±0.2	16.3±0.3	12.2±0.3	12.3±0.4	14±0.3
UF44/52/10	1	44±0.6	26+0/-0.3	10.5+0/-0.5		17±0.5	13.7+0.3/-0
UF44/69/19	1	44±0.6	34.5+0/-0.5	19+0/-0.5		17±0.5	21±0.3
UF45.2/50/17	1	45.2±0.6	25±0.25	17±0.25		11.2±0.5	12.5±0.2
UF46/79/28A	1	46±0.5	39.5±0.5	28±0.5	14±0.3	18±0.5	25.4±0.5
UF59/67/15E	1	59.3±0.6	33.5±0.15	15.1+0.3/-0.4	9.75min	38.5min	23.5±0.25
UF80/129/31.5A	2	80±1.5	64.5±1.25	31.5±1		35min	42.5±0.75
UF128/156/29A	2	128±2	78±1.2	29±0.6	28±0.5	72±2	50±0.8

C1	Ae	Le	Amin	Ve	AL(±25%)				重量 g / PRS
					TP4	TP4A	TP4W	TPW33	
2.26	41.87	94.66	41.6	3963.4	1100	1150	1350	1450	9
0.7	162.94	113.37	162.4	18471.7	3700	3850	4500	5000	96
0.44	265.81	117.77	264.91	31302.8	5850	5950	7200	7800	161
1.1	118.25	129.92	117.65	15362.7	2300	2400	2900	3150	74.1
0.94	103.04	97.33	90.64	10029	2600	2700	3200	3500	62.6
2.07	80	165.53	80	13242.6	1250	1300	1600	1750	19.9
8.6	11.27	97.57	10.8	1099.7	290	300	350	380	5.52
0.58	202.92	117.8	172.78	23903.8	4100	4200	4500	4800	115
0.98	131.35	129.16	123	16964.5	2600	2600	3100	3350	92
0.65	248.44	160.63	248.44	39906.4	4100	4250	5100	5600	202
0.46	252	118	212	29625	5400	5600	6800	7400	152
0.46	392.89	181.74	392	71403.4	5700	5900	7200	7800	360
1.35	151.31	203.77	150.5	30832.4	1950	2050	2500	2700	147
0.44	698.16	310.5	693	216779.4	6200	6400	7800	8500	989
0.53	812.01	431.97	812	350764.8	5200	5400	6600	7200	1732.6