

EFD 型 / EFD Core

型号 TYPE	图例 FIG.	尺寸 Dimensions (mm)						
		A	B	C	D	E	F	G
EFD10	1	10.50±0.30	5.20±0.10	2.70±0.10	4.55±0.15	7.65±0.25	3.75±0.15	1.45±0.05
EFD12	1	12.50±0.30	6.20±0.10	3.50±0.10	5.40±0.15	9.00±0.25	4.55±0.15	2.00±0.10
EFD12.7F	7	12.70±0.30	10.60±0.15	5.40±0.15	4.50±0.15	8.7min	8.10±0.15	3.50±0.15
EFD14.8/15/4.7	2	14.80±0.30	7.50±0.15	4.65±0.15	5.30±0.15	11.3+0.3/-0.2	5.50±0.25	2.40±0.10
EFD15/15/4.7C	2	15.00±0.40	7.50±0.15	4.65±0.20	5.30±0.20	11.00±0.40	5.50±0.15	2.40±0.10
EFD15AH	2	15.00±0.40	7.60±0.15	4.65±0.15	5.30±0.15	11.00±0.35	5.60±0.15	2.40±0.10
EFD15AS	2	15.00±0.40	7.70±0.15	4.65±0.15	5.30±0.15	11.00±0.35	5.5+0.25/-0.1	2.40±0.10
EFD15C	2	15.00±0.40	7.50±0.15	4.65±0.15	5.30±0.15	11.00±0.35	5.50±0.25	2.40±0.10
EFD15.2/15/4.7	8	15.20±0.40	7.50±0.30	4.65±0.20	5.30±0.20	11.15min	5.65±0.20	2.35±0.15
EFD15.5/15/4.7	8	15.50±0.50	7.50±0.15	4.65±0.20	5.30±0.20	11.2min	5.60±0.25	2.30±0.15
EFD16.6W	7	16.55±0.25	19.50±0.20	4.45±0.10	5.8+0.15/-0.2	11.4min	16.55±0.2/-0.1	2.8+0.1/-0.08
EFD17A	7	17.00±0.40	8.50±0.10	5.30±0.15	6.95±0.15	12.65±0.35	6.40±0.20	3.00±0.15
EFD17.7/17.2/5.6	7	17.70±0.30	8.60±0.15	5.60±0.15	7.50±0.30	13.1min	6.30±0.15	3.30±0.10
EFD20	4	20.00±0.55	10.00±0.25	6.65±0.2/-0.15	8.90±0.20	15.40±0.50	7.07±0.25	3.60±0.20
EFD20/20/6.7C	4	20.0±0.40	10.00±0.20	6.65±0.20	8.90±0.20	15.5min	7.80±0.20	3.70±0.25
EFD20.4	4	20.4±0.55	10.00±0.15	6.65±0.15	8.90±0.20	15.80±0.30	7.70±0.25	3.60±0.15
EFD20.4/20.4/6.7	4	20.4±0.55	10.20±0.20	6.65±0.15	8.9+0.15/-0.2	15.80±0.30	7.90±0.20	3.60±0.15
EFD20.5/20/6.7A	4	20.50±0.40	10.00±0.25	6.65±0.2/-0.15	8.90±0.20	15.6min	7.70±0.30	3.60±0.20
EFD24.5	7	24.47±0.65	13.50±0.15	9.29±0.20	11.00±0.20	18.30±0.60	9.325±0.25	5.20±0.15
EFD25H	4	24.99±0.66	12.495±0.155	9.10±0.20	11.405±0.205	18.1min	9.04min	5.205±0.155
EFD25A	4	25.00±0.65	12.50±0.15	9.10±0.20	11.40±0.20	18.70±0.60	9.30±0.25	5.20±0.15

C1	Ae	Le	Amin	Ve	AL(±25%)				重量 g / PRS
					TP4	TP4A	TP4W	TPW33	
3.27	7.23	23.64	6.60	170.90	525	525	610	640	1.00
2.70	10.88	27.68	10.80	301.22	700	740	840	888	1.66
2.40	18.60	43.50	15.75	807.00	940	940	1200	1250	4.42
2.49	14.04	34.89	12.72	489.90	720	740	860	909	2.70
2.33	14.73	34.37	12.72	506.10	780	780	870	920	2.90
2.25	15.43	34.75	12.72	536.30	780	780	860	920	2.73
2.23	15.61	34.72	12.72	542.00	780	780	860	920	2.80
2.33	14.73	34.37	12.72	506.10	780	780	870	920	3.00
2.42	14.68	35.56	12.45	522.00	780	780	829	880	2.80
2.39	14.77	35.31	12.19	521.50	780	780	816	870	2.80
4.22	18.85	79.51	16.23	1498.80	490	508	610	660	8.00
1.82	21.93	39.87	20.85	874.40	1080	1109	1300	1370	4.48
1.63	24.75	40.22	24.08	995.40	1240	1270	1480	1580	4.80
1.56	30.36	47.42	30.70	1439.60	1200	1450	1700	1800	7.60
1.61	29.61	47.63	27.27	1410.10	1240	1280	1500	1600	7.90
1.58	30.26	47.81	30.59	1446.70	1380	1430	1680	1790	7.40
1.56	31.11	48.62	30.59	1512.30	1370	1410	1660	1770	7.58
1.53	31.31	47.90	30.73	1499.80	1390	1430	1680	1790	3.59
0.97	60.91	58.93	57.20	3589.60	2200	2280	2700	2890	19.37
1.02	56.53	57.76	56.69	3264.90	2220	2290	2710	2910	17.00
1.03	56.39	58.01	57.33	3271.20	2240	2310	2740	2930	16.50

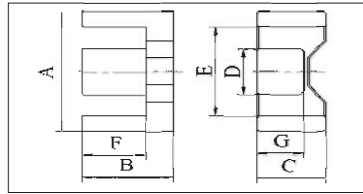
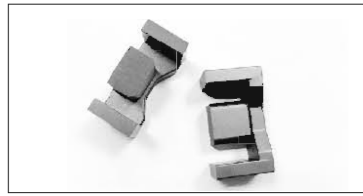


FIG.3

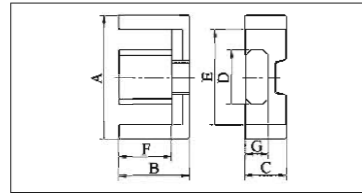


FIG.4

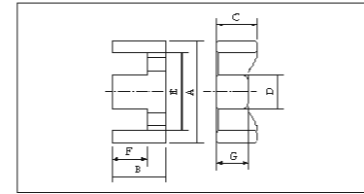


FIG.5

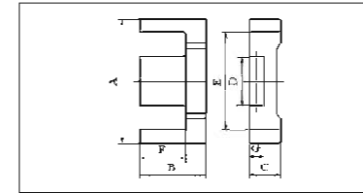


FIG.6

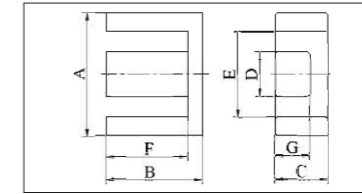
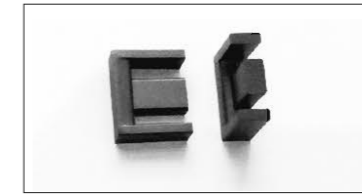


FIG.7

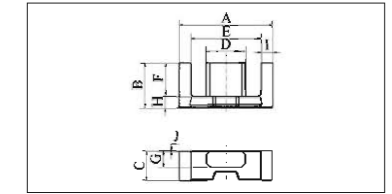
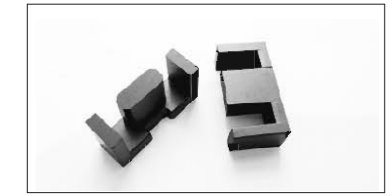


FIG.9

EFD 型 / EFD Core

型号 TYPE	图例 FIG.	尺寸 Dimensions (mm)							重量 g / PRS
		A	B	C	D	E	F	G	
EFD25AQ	4	25.00±0.50	15.3+0.3/-0	11.00±0.20	10.00±0.20	19min	12+0.3/-0	6.50±0.20	
EFD25B	4	25.00±0.65	12.50±0.25	9.10±0.20	11.40±0.20	18.70±0.60	9.30±0.25	5.20±0.25	
EFD25BN	4	25.00±0.65	12.70±0.25	9.10±0.20	11.47±0.20	18.70±0.60	9.50±0.25	5.20±0.25	
EFD25C	4	25.00±0.65	12.5+0.25/-0.15	9.10±0.20	11.40±0.20	18.7+0.6/-0.5	9.3+0.35/-0.15	5.20±0.15	
EFD25J	4	25.50±0.60	12.50±0.15	9.20±0.20	11.40±0.20	19.30±0.60	9.30±0.25	5.20±0.15	
EFD25G	4	25.60±0.65	12.50±0.15	9.10±0.20	11.4+0.1/-0.2	19.3 min	9.3+0.25/-0	5.2+0.1/-0.15	
EFD26/25.4/9	4	26.00±0.50	12.70±0.15	9.00±0.20	11.3+0.1/-0.2	19.7min	9.50±0.15	5.2+0.1/-0.15	
EFD26.3/25.4/9.1	4	26.30±0.50	12.70±0.15	9.10±0.20	11.4+0.1/-0.2	20min	9.50±0.15	5.2+0.1/-0.15	
EFD30	4	30.00±0.80	15.00±0.25	9.10±0.30	14.60±0.30	22.40±0.75	11.20±0.30	4.90±0.15	
EFD30L	4	30.75max	15.5max	9.00±0.20	14.60±0.25	23.1min	11.4+0.3/-0.1	4.90±0.15	
EFD31.4/35/8.8A	4	31.40±0.50	17.50±0.15	8.80±0.20	14.60±0.25	23.4min	13.70±0.30	4.90±0.15	
EFD30I	4	31.7max	15.20±0.30	9+0.3/-0.2	14.6+0.3/-0.25	23.8min	11.4+0.3/-0.1	4.9+0.2/-0.15	
EFD3245/32.3/10.3E	9	32.45±0.60	16.15±0.15	10.30±0.30	14.1+0.25/-0.35	24.50±0.50	12.15±0.20	6.00±0.20	
EFD33/32.3/10	6	33.00±0.50	16.15±0.15	10.00±0.20	13.00±0.20	25.5min	12.15±0.25	5.50±0.20	
EFD35E	7	35.00±0.50	29.10±0.20	5.40±0.15	15.00±0.20	24+0.5/-0.3	23.3+0.3/-0.1	3.8+0.1/-0.2	
EFD36.3H	5	36.30±0.70	19.75±0.20	16.20±0.40	14.50±0.35	27.10±0.55	14.40±0.30	10.50±0.30	
EFD38.5/26.6/19.3	3	38.50±0.50	13.30±0.20	19.25±0.30	12.00±0.30	29.2min	8.50±0.20	13.50±0.30	
EFD41	7	40.80±0.50	29.50±0.25	6.00±0.20	18.40±0.25	27.5min	22.5+0.4/-0.1	4.2+0.1/-0.2	

C1	Ae	Le	Amin	Ve	AL(±25%)				重量 g / PRS
					TP4	TP4A	TP4W	TPW33	
1.13	62.93	71.05	60.50	4470.70	2010	2080	2480	2660	22.50
1.03	56.39	58.01	57.33	3271.20	2240	2310	2740	2930	21.00
1.04	56.41	58.81	57.33	3317.90	2210	2290	2710	2900	15.70
1.04	56.03	58.36	56.87	3269.80	2210	2280	2700	2900	16.60
1.04	56.45	58.62	57.04	3309.20	2210	2280	2700	2890	17.50
1.11	53.28	59.18	51.42	3153.00	1970	2040	2420	2590	16.60
1.10	54.50	60.02	52.20	3271.10	1980	2050	2430	2600	16.23
1.11	54.42	60.33	52.78	3283.00	2000	2060	2450	2620	16.47
1.01	68.02	68.89	69.16	4685.60	2350	2430	2900	3120	25.00
0.99	69.00	68.00		4700.00	2370	2450	2920	3140	23.90
1.17	68.26	80.13	66.00	5470.20	1980	2050	2460	2650	23.65
	69.00	68.00		4700.00	2370	2450	2920	3140	23.17
0.91	82.93	75.63	81.89	6272.00	2580	2670	3190	3440	31.50
1.13	68.16	77.36	70.00	5272.60	2160	2240	2680	2890	27.89
2.10	58.28	122.46	56.25	7136.70	1170	1220	1480	1600	36.20
0.58	155.54	90.03	149.04	14002.80	4060	4210	5060	5460	68.00
0.43	161.85	69.79		11294.40	5450	5640	6720	7230	59.00
1.60	77.48	124.11	76.36	9616.40	1570	1800	1980	2150	50.00